

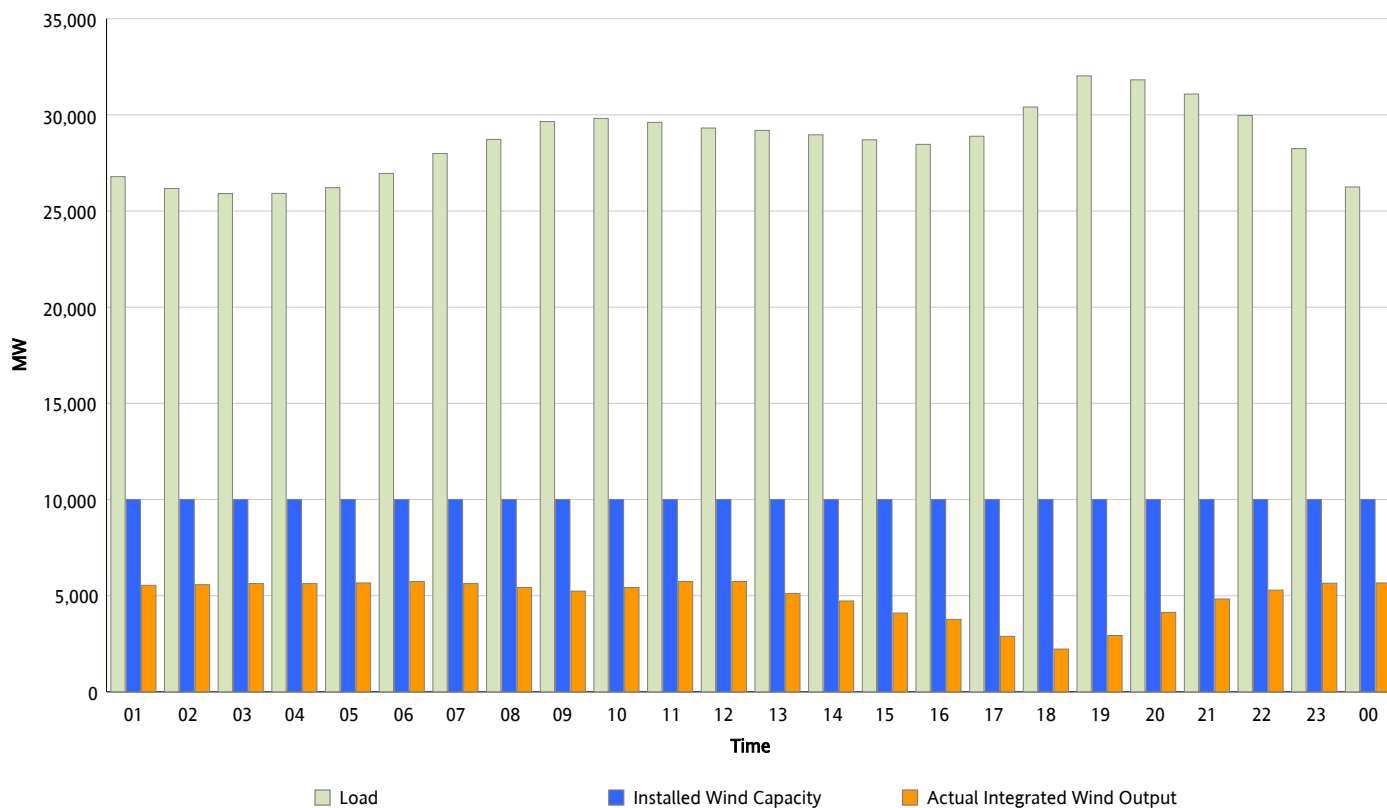


## ERCOT Grid Operations

### Wind Integration Report : 11/18/2012

|                      |           |
|----------------------|-----------|
| Peak Load            | 32,028 MW |
| Load Peak Hour (HE)  | 19        |
| Wind Over Peak       | 2,930 MW  |
| Wind Record 11/10/12 | 8,521 MW  |
| Max Wind Value*      | 5,922 MW  |
| Wind Peak Time       | 11:01     |
| Wind Integration %   | 20.18 %   |

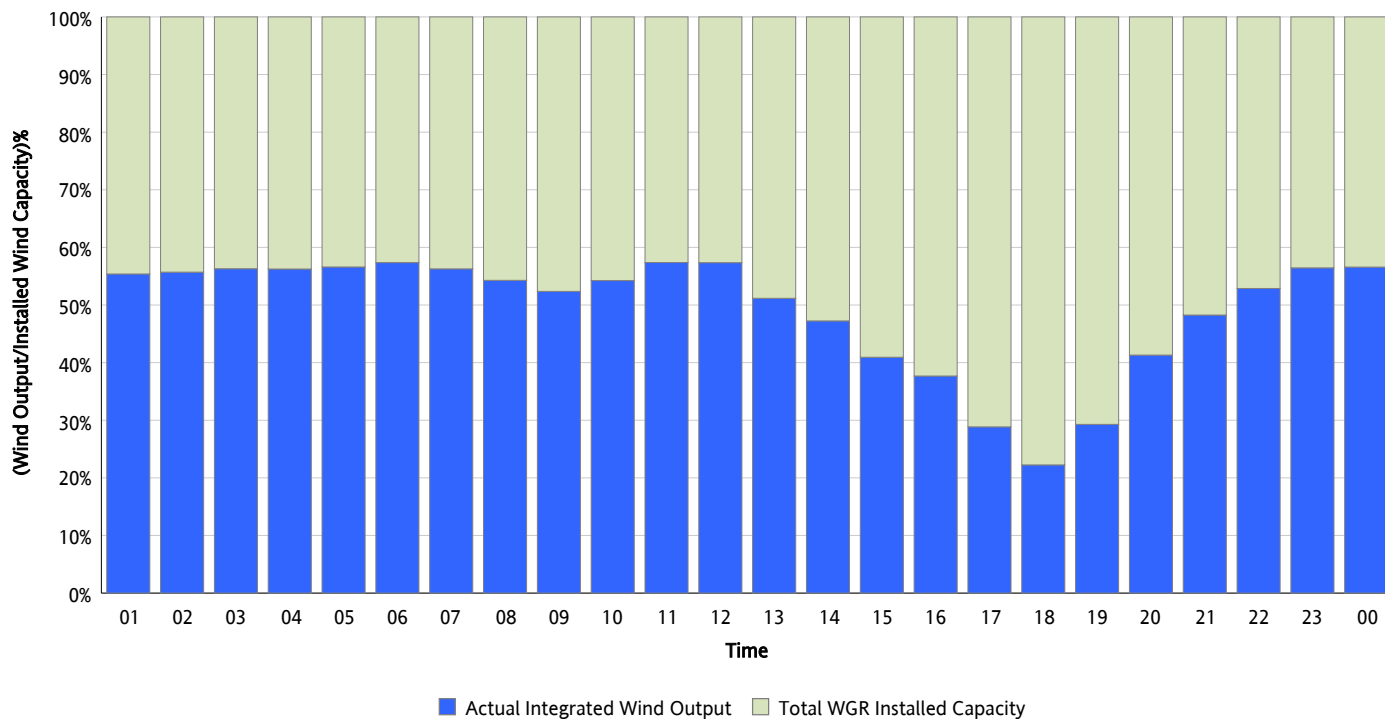
**Hourly Average Actual Load vs. Actual Wind Output**  
11/18/2012



*\* Wind Record and Wind Max represent instantaneous values and the rest of the values are integrated over the hour*

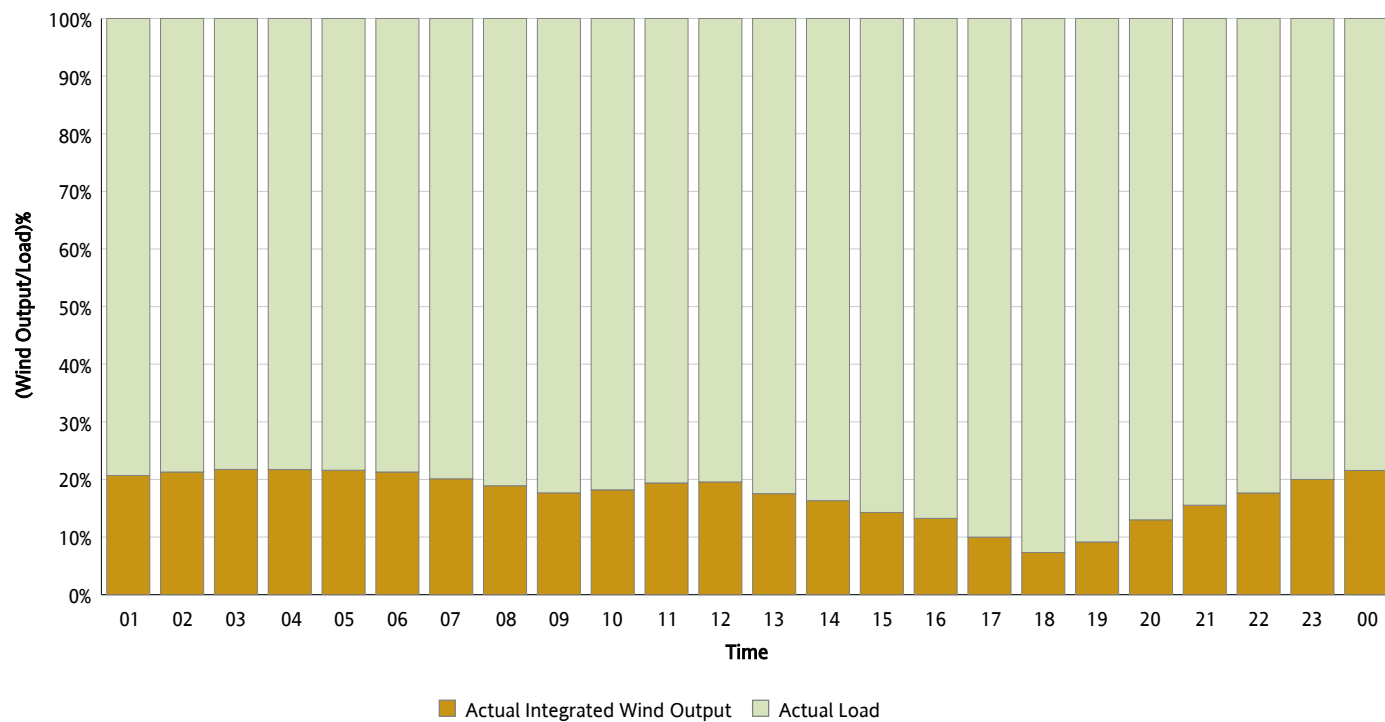
## Actual Wind Output as a Percentage of the Total Installed Wind Capacity

11/18/2012



## Actual Wind Output as a Percentage of the ERCOT Load

11/18/2012



## ERCOT Load vs. Actual Wind Output

11/11/2012 - 11/18/2012

